

# Autonomous Robots

Prof. em. Dr.rer.nat. H. Tolle  
Technische Universität Darmstadt



TECHNISCHE  
UNIVERSITÄT  
DARMSTADT

e-mail: [tolle@rtr.tu-darmstadt.de](mailto:tolle@rtr.tu-darmstadt.de)

- I. Information Processing Structure  
for Service Robots
  
- II. Implementation Examples
  - A Learning on the Sensor-Motoric Level
  - B Man-Machine Interface
  
- III. Concluding Remarks



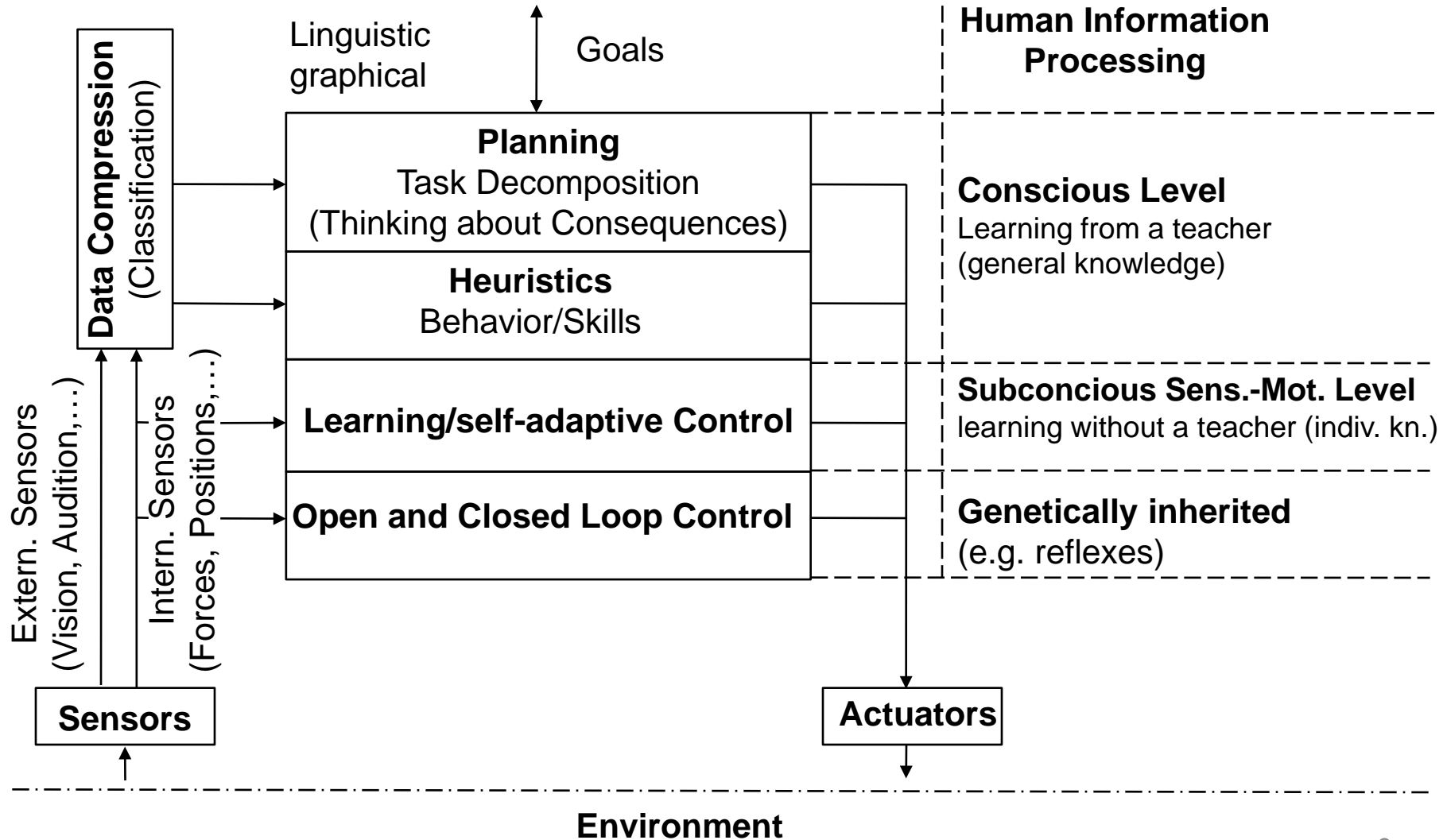
# I. Information Processing Structure for Service Robots

## II. Implementation Examples

- A Learning on the Sensor-Motoric Level
- B Man-Machine Interface

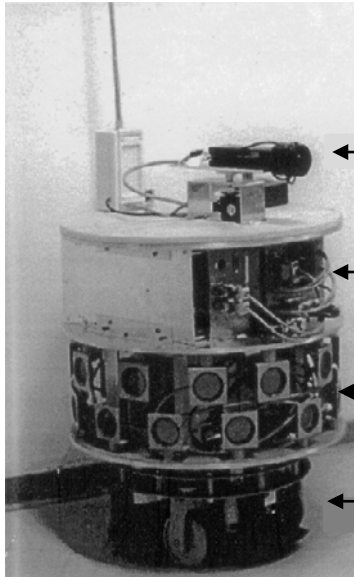
## III. Concluding Remarks

## Men-Machine Interface



## Example 2

Real  
experiments



Fixed Camera  
for environment  
mapping

Onboard PC  
for robot control

Ultrasonic  
sensors

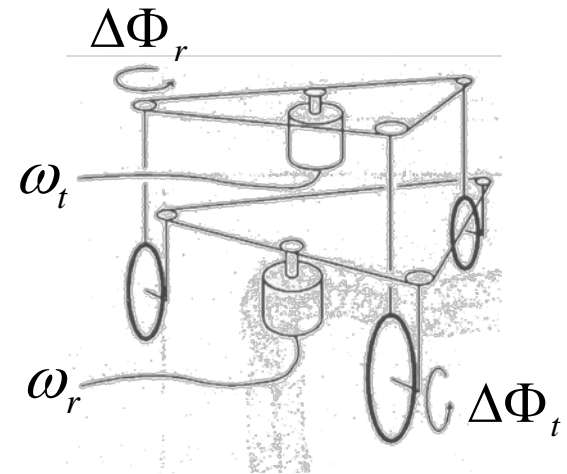
Odometric  
sensors

## Example 1

Simulation +  
Real  
experiments

## ALEF

Autonomes Lernfähiges Fahrzeug



## ALEF Kinematics

Input  $\omega_r, \omega_t$  angular motor velocities  
Output  $x, y, \alpha$  from  $\Delta\Phi_r, \Delta\Phi_t$ :

$$\Delta x = f_t \Delta\Phi_t \cos[\alpha(k-1)]$$

$$\Delta y = f_t \Delta\Phi_t \sin[\alpha(k-1)]$$

$$\Delta\alpha = f_r \Delta\Phi_r$$

( $f_t, f_r$  = determined gear ratios)



## Autonomous Robots

### I. Information Processing Structure for Service Robots

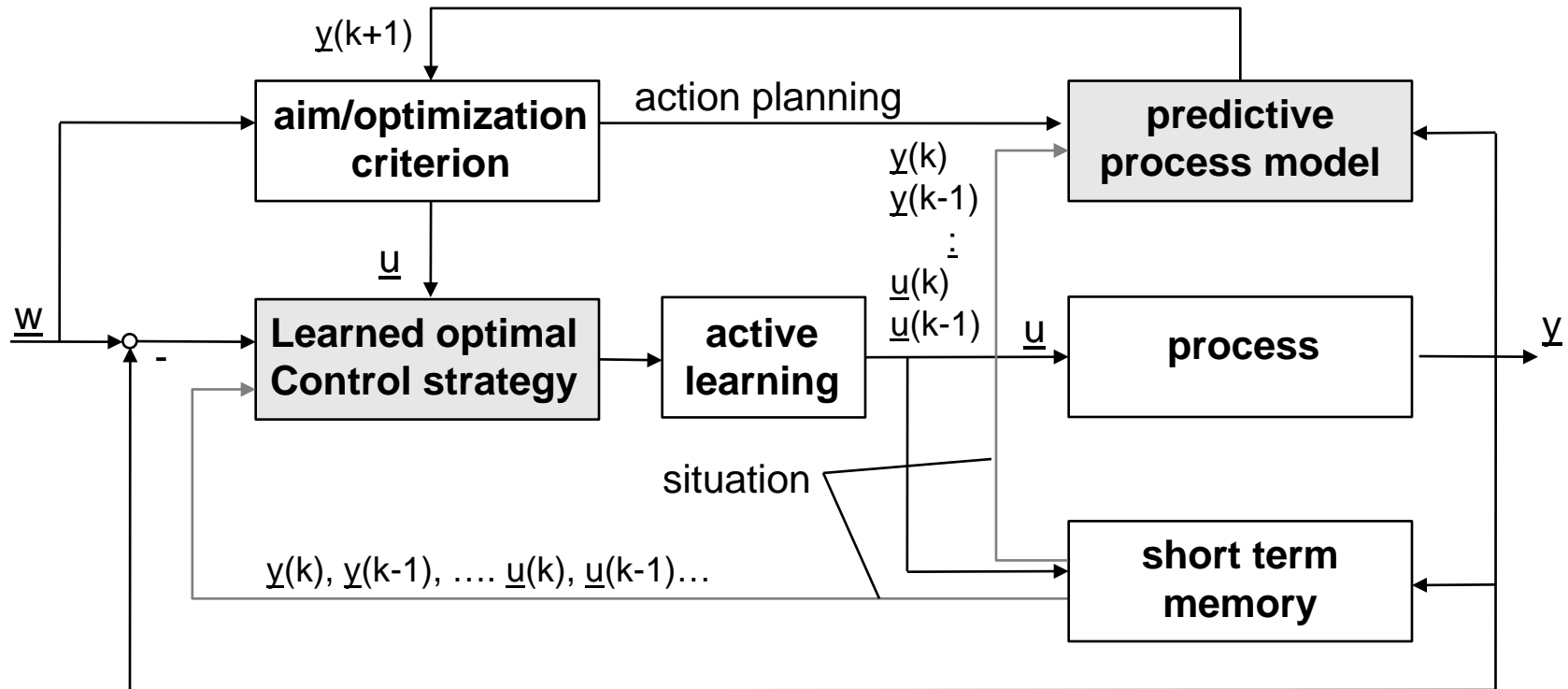
### II. Implementation Examples

#### A Learning on the Sensor-Motoric Level

*/Kurz 94/ /Tolle, Kurz 98-International Journal of  
Intelligent Control and Systems/*

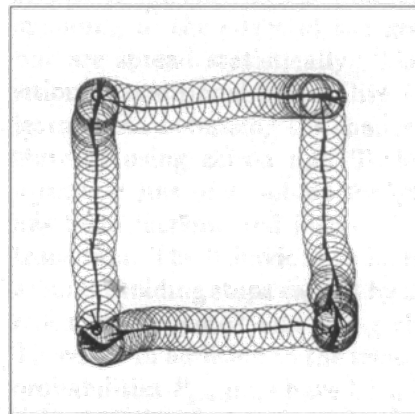
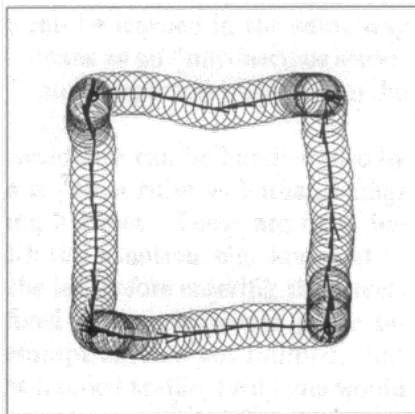
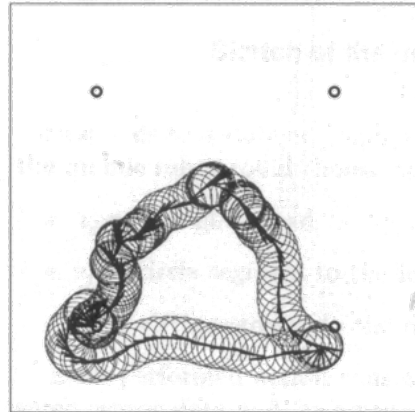
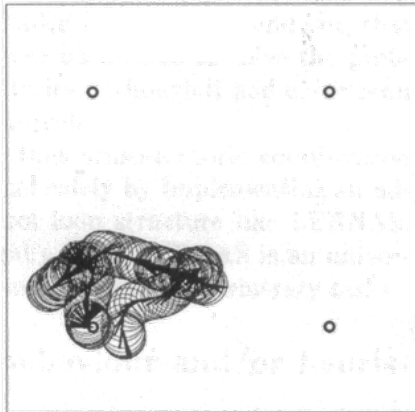
#### B Man-Machine Interface

### III. Concluding Remarks



LERNAS a structure for self-adaptive (learning) nonlinear control for “fairly unknown“ complex nonlinear processes; “fairly unknown“ meaning, that only some qualitative knowledge on observability, controllability and process dynamics is required.

Grey boxes: Interpolating Memories



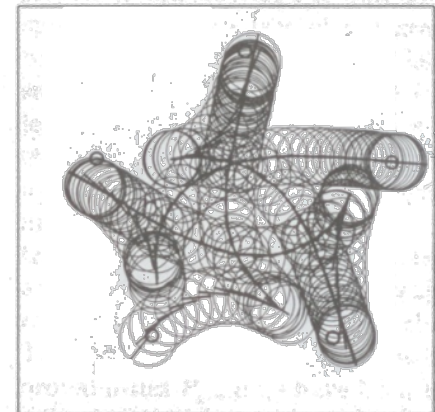
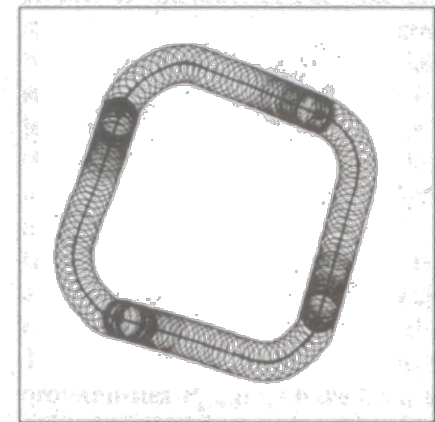
**Simulated**

**Real**

Optimization Criterion: (  $\gamma$  = Direction error to target)

$$I(k) = \sum_{i=k}^{k+l} a_1 \omega_i^2 + a_2 \omega_r^2 + a_3 \gamma^2 + [x(k+l) - x_{target}]^2 + [y(k+l) - y_{target}]^2$$

## Simulated - Kinematics



Front Wheel - Movable  
Rear Wheels - Rigid Axle  
Similar Optimization Criterion.



## Autonomous Robots

I. Information Processing Structure  
for Service Robots

## II. Implementation Examples

A Learning on the Sensor-Motoric Level

### **B Man-Machine Interface**

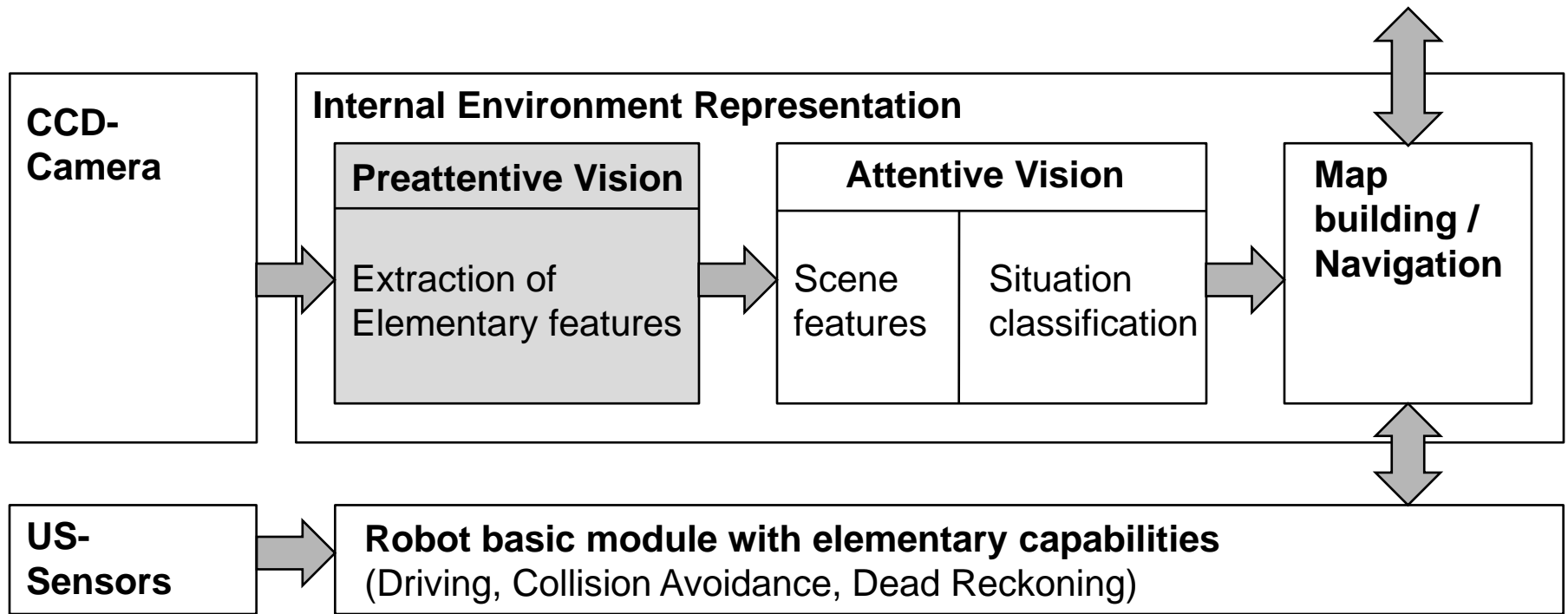
*/von Wichert 98//von Wichert 99 Control Engineering Practice/*

III. Concluding Remarks



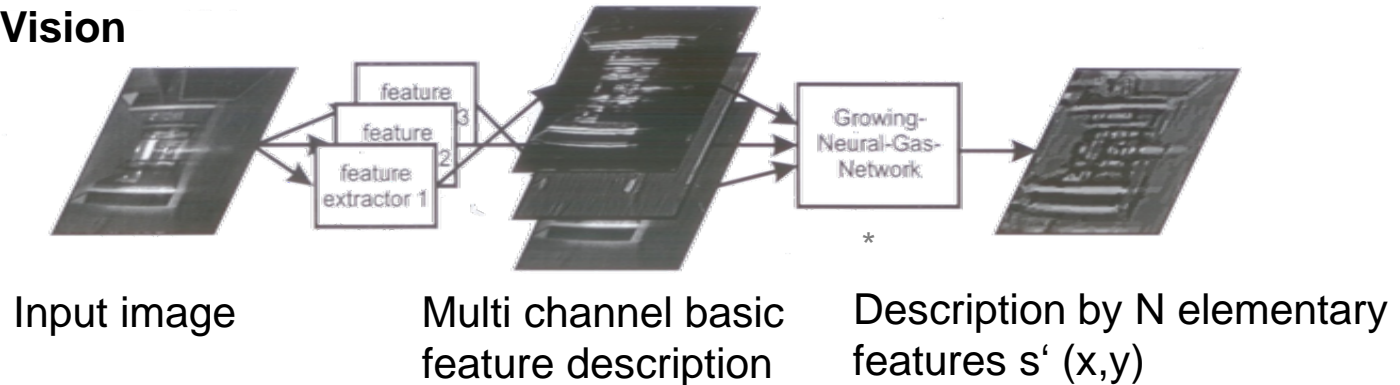
## Internal Environment Representation = Building the Interface at the Machine Level

Target: to reach a robust environment description on the basis of CCD-camera information and to build up some map of the environment autonomously



\* |Fritzke 95 - Advances in Neural Information Processing|

## Preattentive Vision

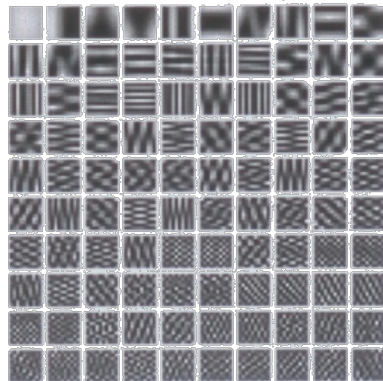


### Filtering example:

Self-adapting  
Principal  
component  
Feature extractors



Filters which are in  
accordance with  
the dominant  
horizontal and  
vertical structures



### Classification example:

(9 Neurons)

Input image

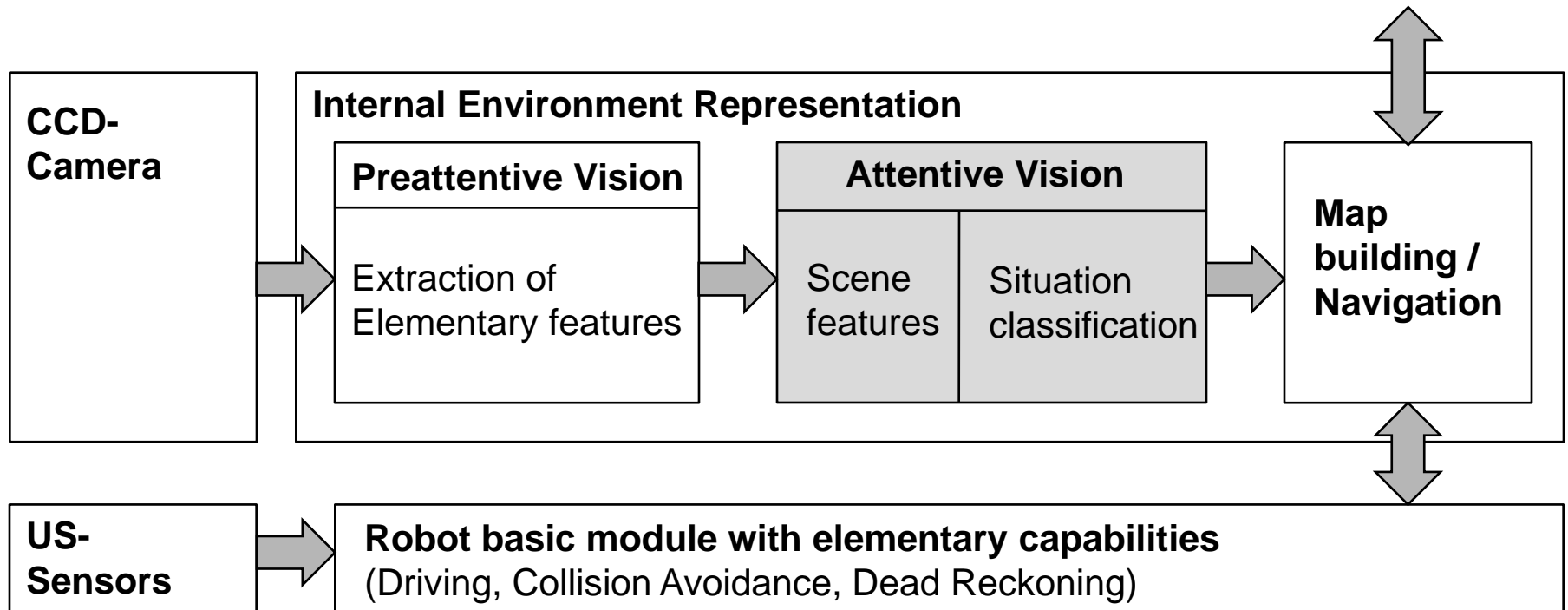


Robust elementary  
features generated by  
GNG-Net- recombination  
of the multi channel  
description



## Internal Environment Representation = Building the Interface at the Machine Level

Target: to reach a robust environment description on the basis of CCD-camera information and to build up some map of the environment autonomously



## Attentive Vision – Scene Features

- The distribution of the elementary features is characterized by a number of geometric moments,

$$m_c^{p+q} = \sum_{l=0}^L \sum_{m=0}^M x^p y^q \delta(c - s'(x, y)) w(x, y)$$

which are combined into a scene feature vector.  $\underline{x} = [m_1^{(0,0)} \dots m_{N_c}^{(p_{\max}, q_{\max})}]$

- Defining a distance measure  $\Delta = \|\underline{x} - \underline{x}_{ref}\|$  similarity can be judged.



reference image

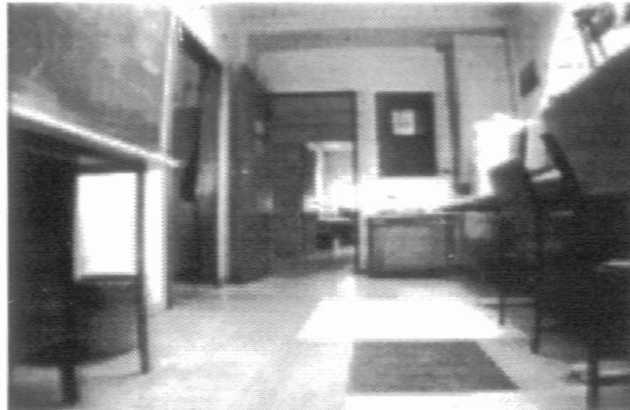


other images in order of similarity

## Attentive Vision – Situation Classification (again by Growing-Neural-Gas-Networks)

Example of two classes:

„free space“



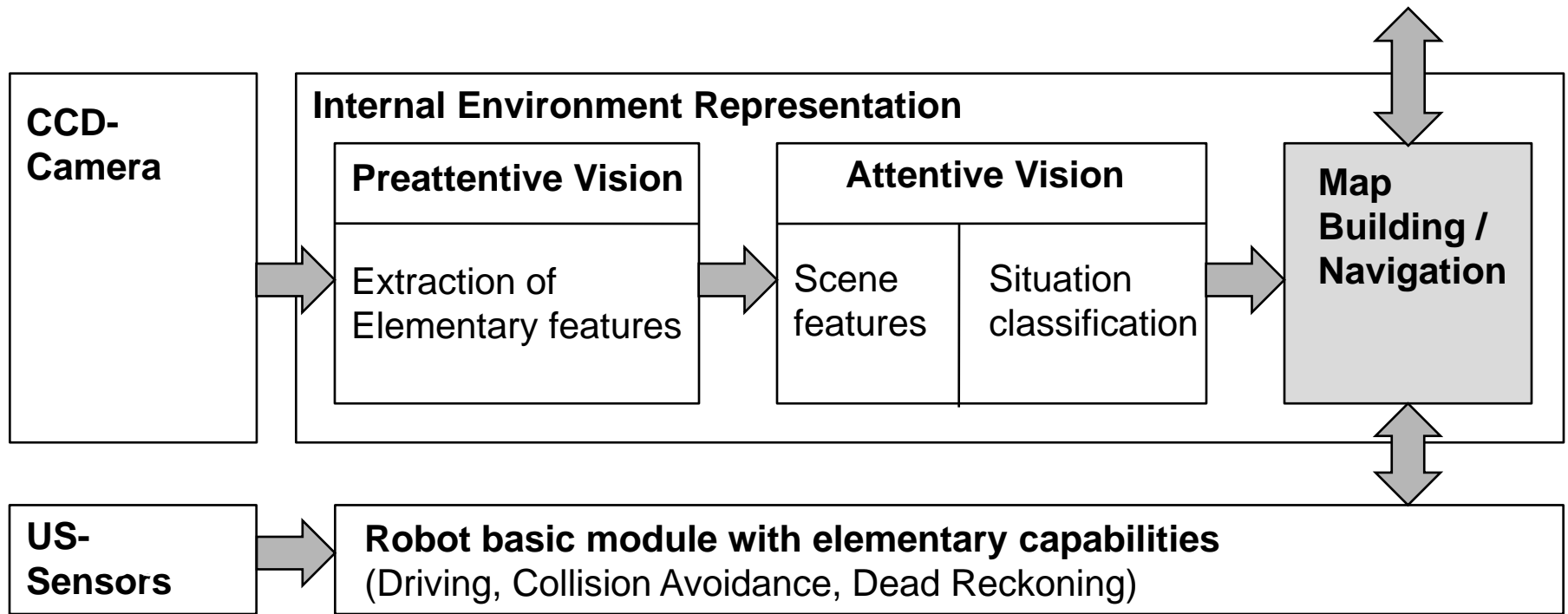
„narrow passage“



GNG – Reduction to 3 Neurons

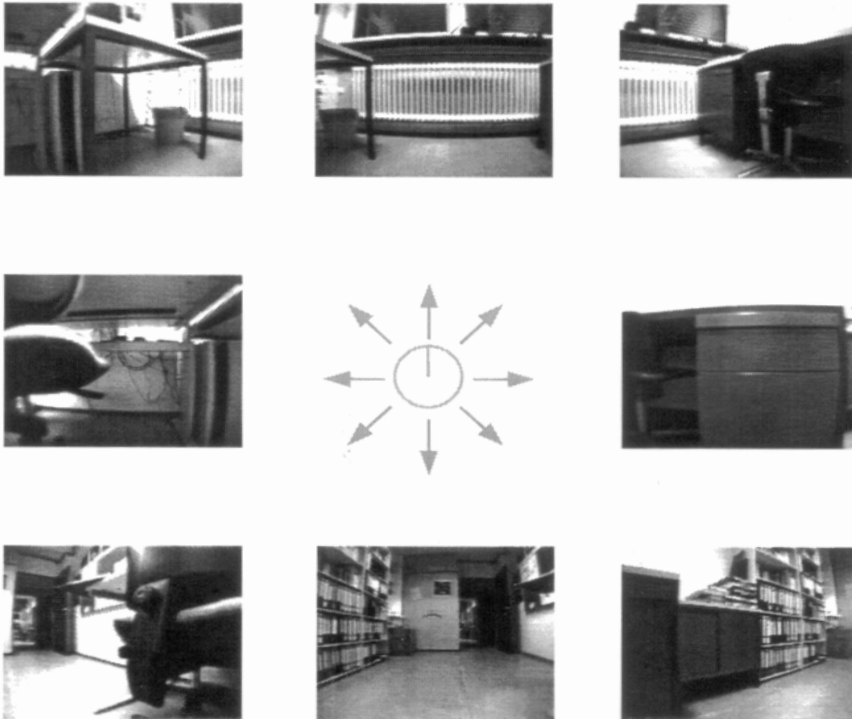
## Internal Environment Representation = Building the Interface at the Machine Level

Target: to reach a robust environment description on the basis of CCD-camera information and to build up some map of the environment autonomously

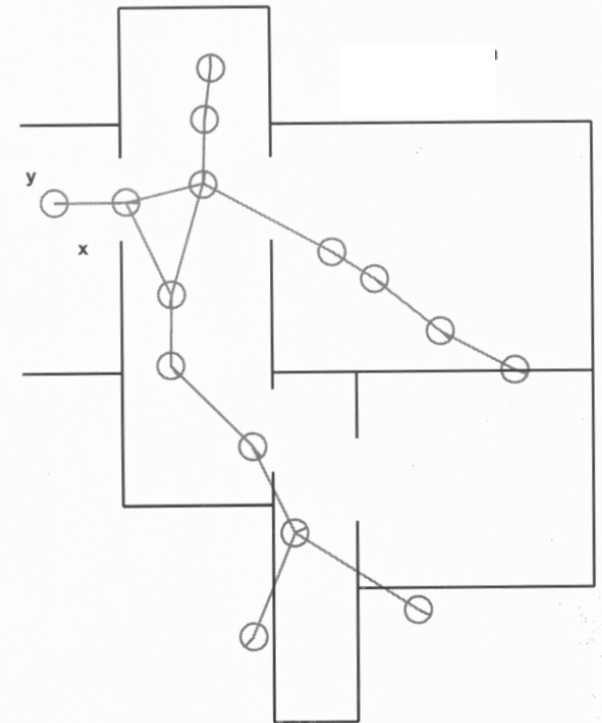


## Map building

A topological map is built up by guiding the robot through the environment. Nodes are put either after a maximum distance or when the GNG classification identifies a new situation. Dead reckoning measurements are used to give cartesian node positions - naturally faulty.



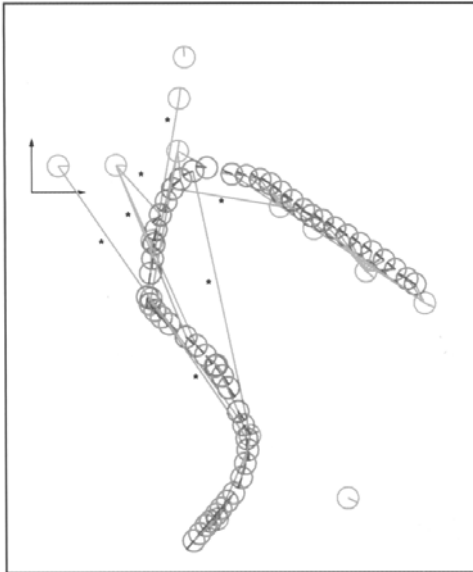
Example: Omnidirectional view in some node.



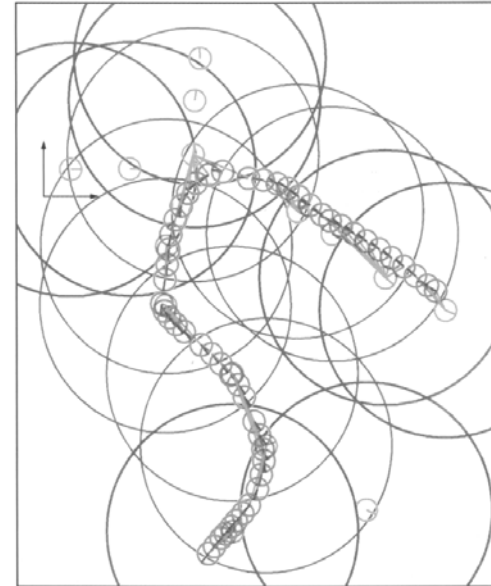
Map with cartesian position estimate and real floor plan.

## Navigation:

Driving a given path on the basis of the map using the expected vision information in the driving direction. Cartesian position estimated by the dead reckoning system. (Target specification by an operator).



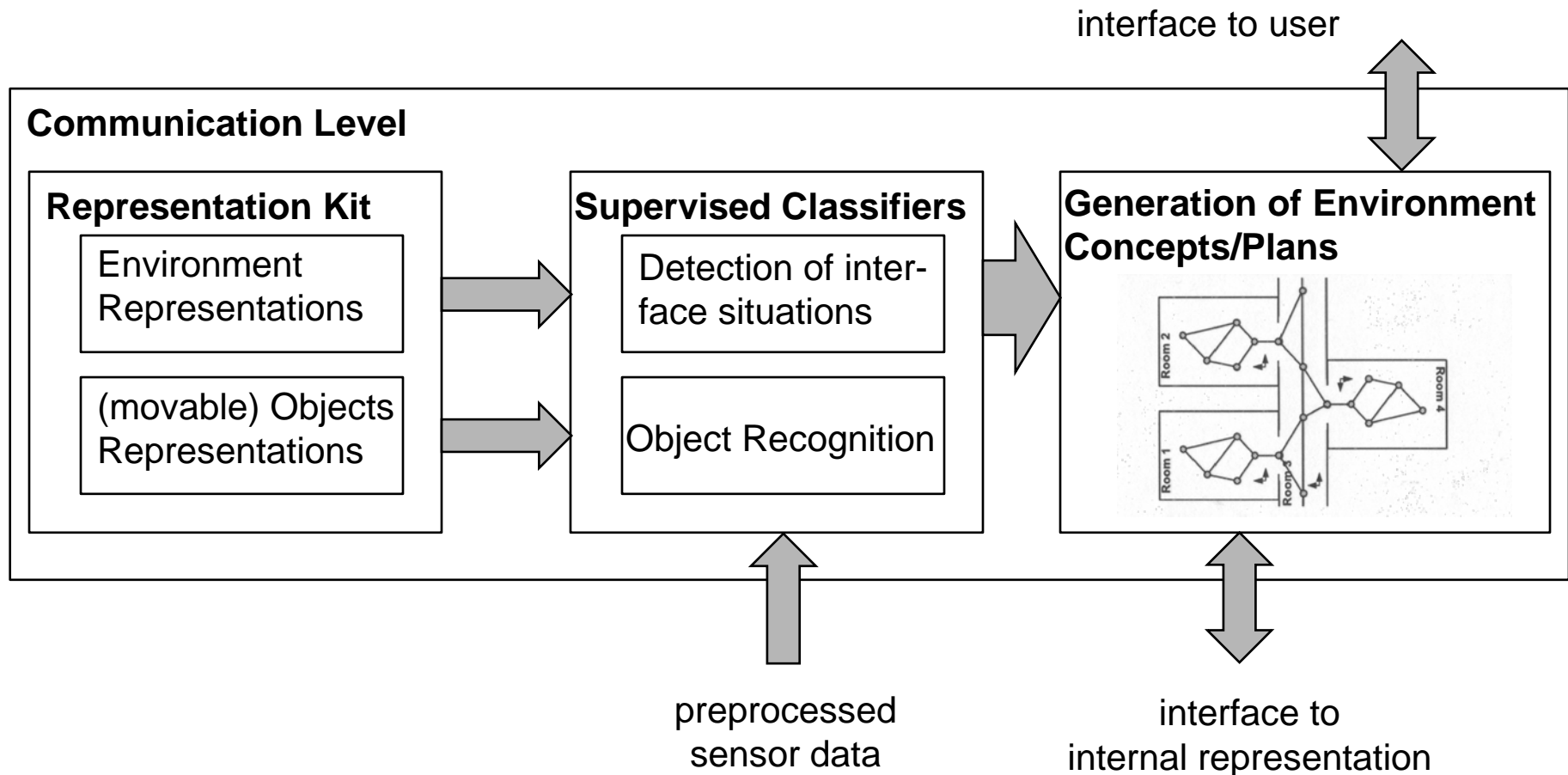
Path travelled on the basis of dead reckoning localization by connection of robot position with assumed position by one image: \*=Erroneous localization



Errors can be removed by using three images and excluding images more than 2,5m away from estimated cartesian position.

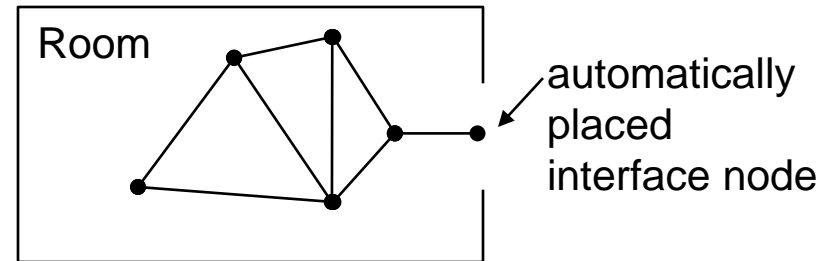


## External Environment Representation = Building the Interface for the user (Schemes)



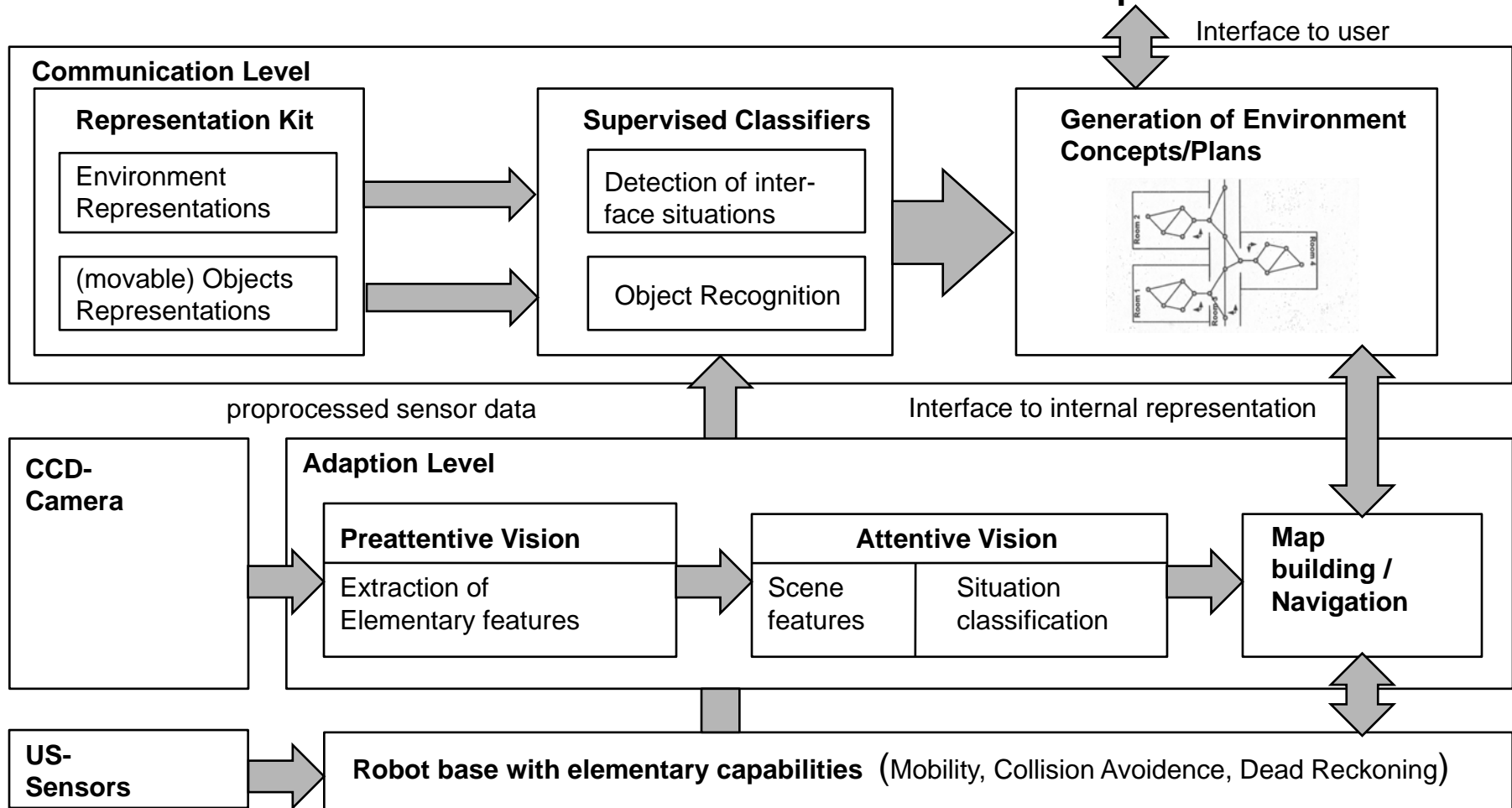
Representations (Schemes) are general descriptions with as well an easy conceptual and linguistic description for the robot user as an easy characterization/description possibility for the robots internal world representation:

e.g.: room – for the user a rectangle with on or more doors, for the robot a closed environment partition with one or more access possibilities

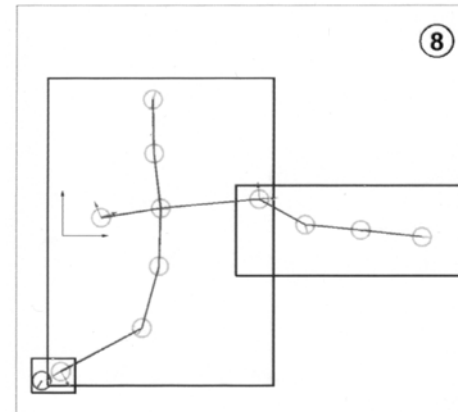
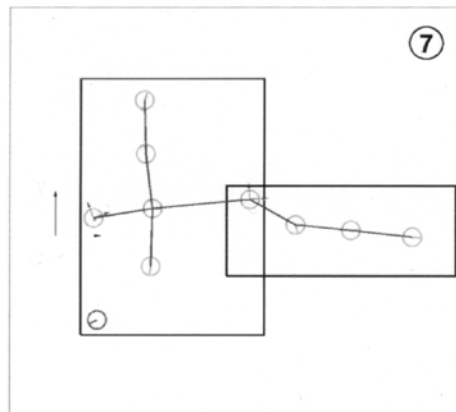
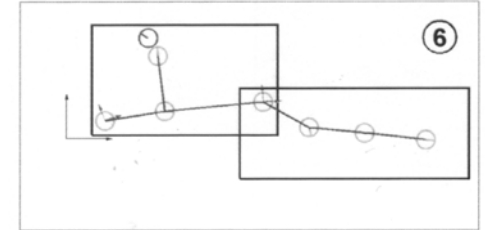
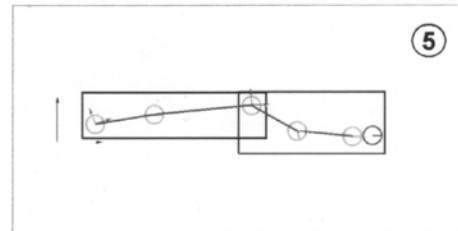
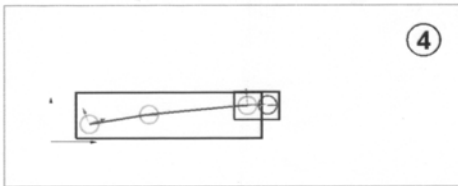
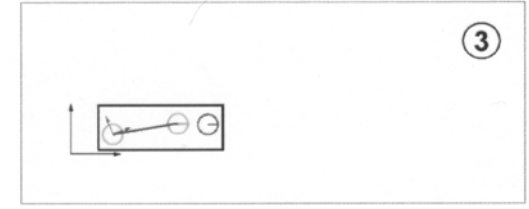


To build concepts from the internal map, knots are placed automatically when a small opening is passed – detected by the ultrasonic sensors

## Men-Machine Interface = Combination of Internal and External Representations



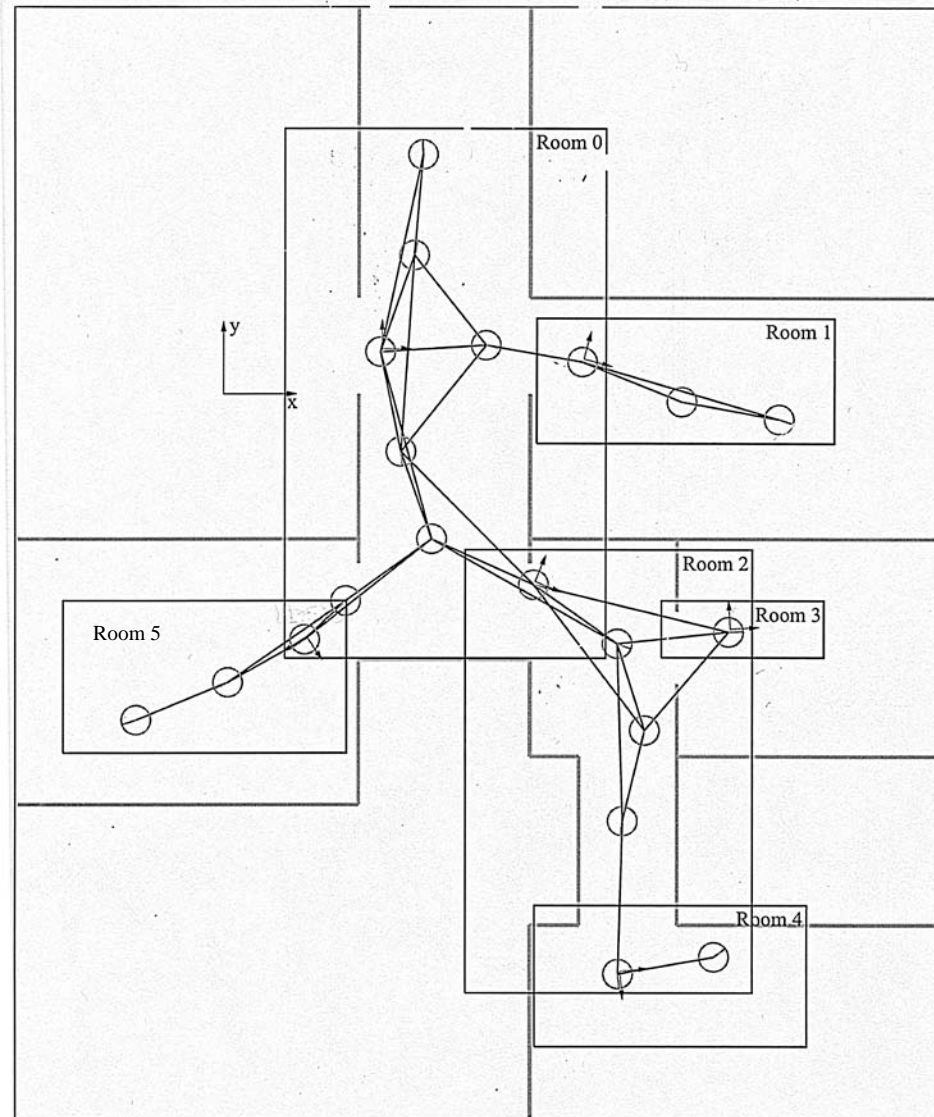
## Example of the stepwise generation of a floor plan of our office by using the scheme room.



**Result:** Established map  
of our office environment

**Possible  
Application:**

**Go from Room 5  
to Room 4**





## **Autonomous Robots**

### I. Information Processing Structure for Service Robots

### II. Implementation Examples

- A Learning on the Sensor-Motoric Level
- B Man-Machine Interface

### **III. Concluding Remarks**



- **Amount of learning depends on the Task-Complexity of the considered Service Robot**

- **Men – Machine Interface**

- ? Proposed Structure similar to Human Information Processing Brain Structure

- left Hemisphere – unsupervised learning

- => ? self-generated internal conceptions

- right Hemisphere – supervised learning

- => ? (Language) General conceptions – e.g. chair

- ? **Open: Exchange between Information Processing Levels**

- Planning Level – Rule Based Level

- Rule Based Level – Sensomotoric Level  
(Conscious – Unconscious Level)

- Learned Behaviour – Reflex Level



## Literature

**Ersü 84:** „*On the Application of Associative Neural Network Models to Technical Control Problems* „*Localization and Orientation in Biology and Engineering*“, ed, by Varju/Schnitzler; Springer Verlag.

**Fritzke 95:** „*A Growing Neural Gas Network learns Topologies*“, Advances in Neural Information Processing Systems, No. 7.

**Kurz 94:** „*Lernende Steuerung eines autonomen mobilen Roboters*“, Fortschrittsberichte VDI, Reihe 8: Meß- Steuerungs- und Regelungstechnik, Nr. 428, Darmstädter Dissertation.

**Rasmussen 93:** „*Skills, Rules and Knowledge; Signals, Signs, Symbols and other Distinctions in Human Performance Models*“, IEEE Transactions, Man and Cybernetics.

**Tolle 91:** „*Autonomieerhöhung durch Imitation menschlicher Intelligenz*“ at. Automatisierungstechnik, Heft 3/4, Oldenbourg Verlag.

**Tolle 2001:** „*Autonomieerhöhung durch Lernen – Teil I“ Grundsätzliches und Lernen im motorischen Bereich; Teil 2: Erlernen von Heuristiken, Planungs- und Kommunikationsgrundlagen.* at- Automatisierungstechnik, Heft 5/6, R. Oldenbourg Verlag

**Tolle et al. 92:** „*Learning Control with interpolating memories – general ideas, design layout, theoretical approaches and practical applications*“, International Journal of Control and Systems No. 2.

**Tolle, Kurz 98:** „*Learning aspects for Mobile Service Robots*“, International Journal of Control and Systems.

**Von Wichert 98:** „*Ein Beitrag zum Erlernen der Wahrnehmung: Grundlagen und Konsequenzen für die Architektur autonomer mobiler Roboter*“, Fortschrittsberichte VDI, Reihe 8: Meß- Steuerungs- und Regelungstechnik, Nr. 727, Darmstädter Dissertation.

**Von Wichert 99:** „*Can Robots learn to see*“, Control Engineering Practice.