

# “Artificial Intelligence” and crime - deep fake -

---

Dirk Labudde  
31.07.2019

**FoSIL**

# What is a video?



*video , I see' --- videre , see'*

# What is a video?

**Video** is an electronic medium for the **recording**, copying, playback, broadcasting, and display of moving visual media.



content



**REALITY**

Transportation of emotions statement's

Transportation of facts

What is the impact of AI on the perception of videos for the law /legal system?

**Counterfeiting of evidence**





Witness 1



Witness 2



**A new quality of deception**

FAKE

Deep Learning

Social Engineering

Truth / lie

What is the influence of artificial intelligence for legal relations?



# «deep learning» and «fake»

Deepfake is an AI-based technology used to produce or alter video content so that it presents something that didn't, in fact, occur. The word, which applies to both the technologies and the videos created with it, is a portmanteau of *deep learning and fake*.

## Deepfake



Tinder - dodger



fraud

# Dangers of deepfakes

- Identity Stealing
- Computer fraud
- blackmail
- voice or image manipulation in the process of Authentication
- Counterfeiting of evidence (in criminal proceedings) § 268 StGB (manipulate the initial situation, activities ...)
- Body movements can be manipulated



Tinder - dodger

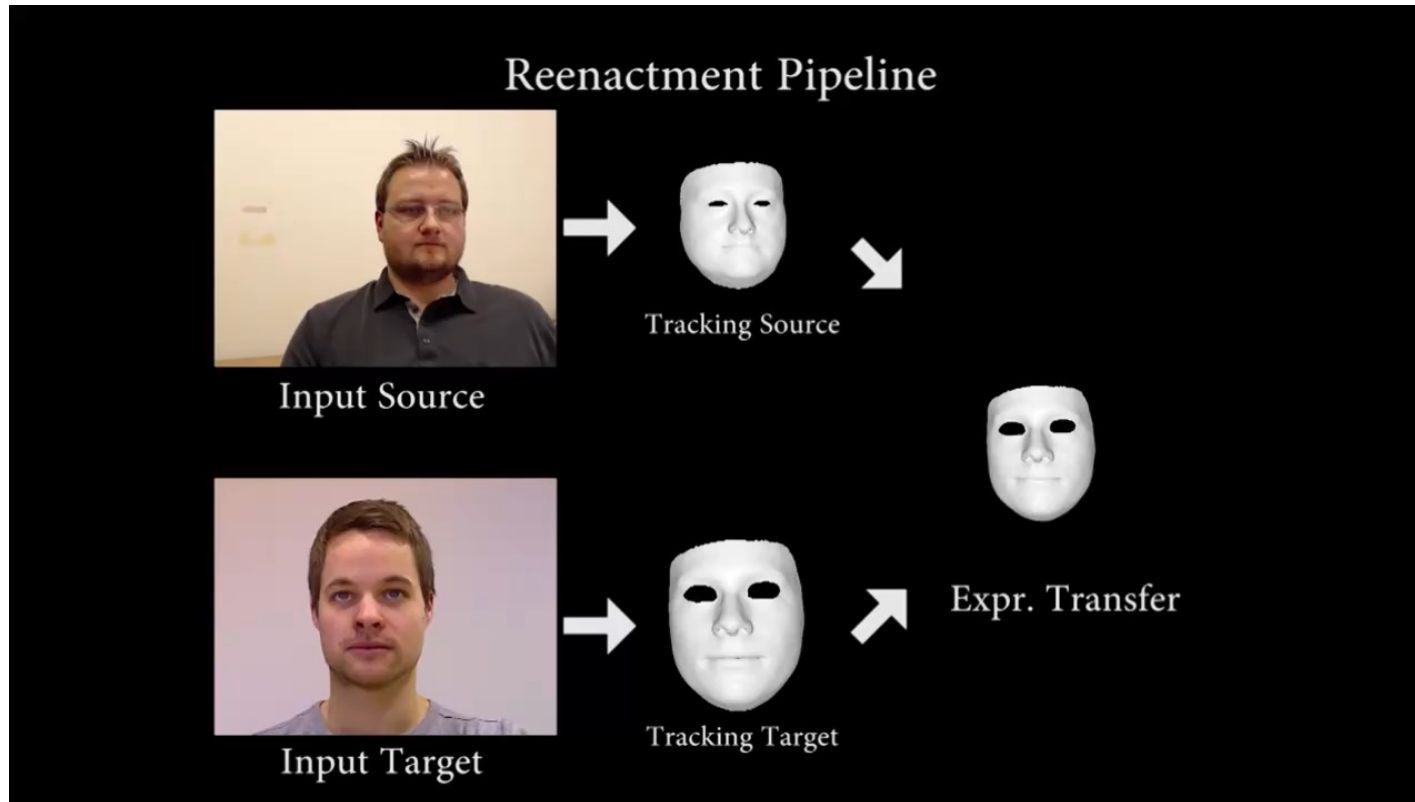
Changed videos and pictures ...



# Deepfakes -Face2Face

- Real-time rebuilding of faces
- **Works with standard webcam**
- Objective: Movements in the face of the target video should be replaced by persons of another
- Manipulation ... As realistic as possible







**A new quality of deception**

Deepfake – basis idea

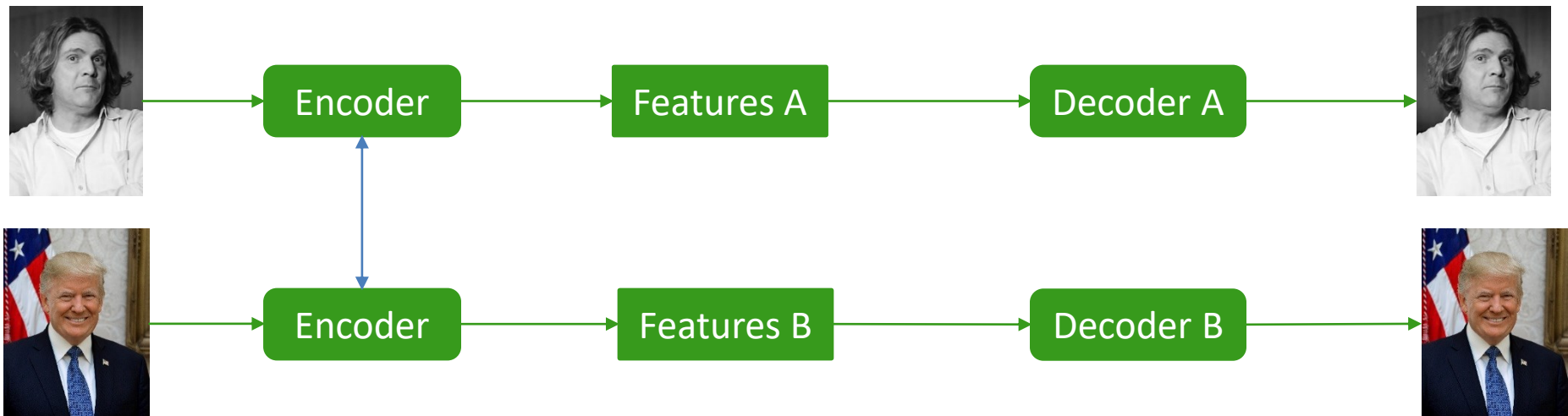
- Computer-generated special effect for sound and image recordings
- Combined image warping with interpolation
- Calculation of intermediate transitions between single images or sounds
- Complex process consists of
  1. Warping
  2. Tweening (intermediate pictures)
  3. Cross-dissolving





# Creating deepfakes

- Concept: Autoencoder (neural network that is trained on compression and decompression of video-frames)
- Consists of 1 input (encoder) and 2 outputs (decoder)
  - Encoder analyzes and encrypts images Using Deep Learning Network CNN (Convolutional Neural Network)
  - Decoders generate different output for face A and face B
  - Add face B to A at the end (or vice versa)





# Creation of emotions in politics

**How artificial intelligence can be the statement analysis /  
credibility assessment  
of media in legal relations?**

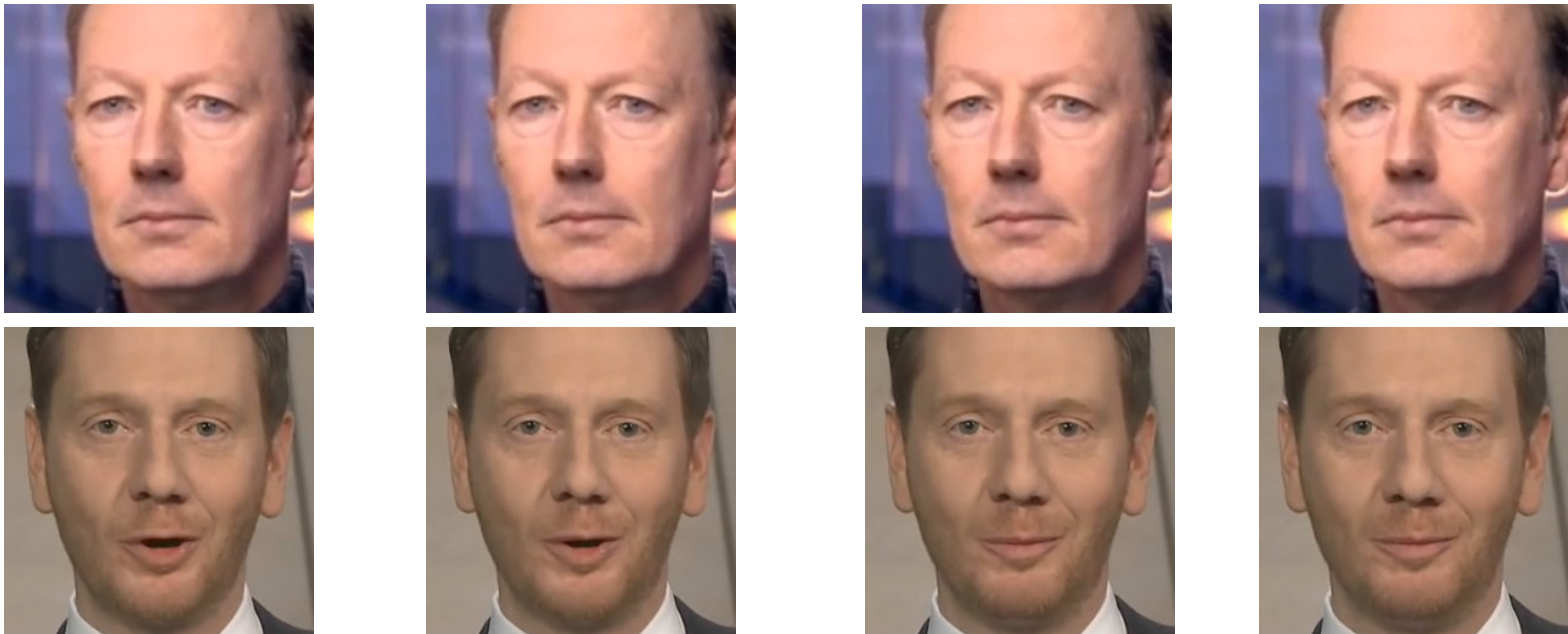
## 1. sources



## 2. AI splits videos into individual frames

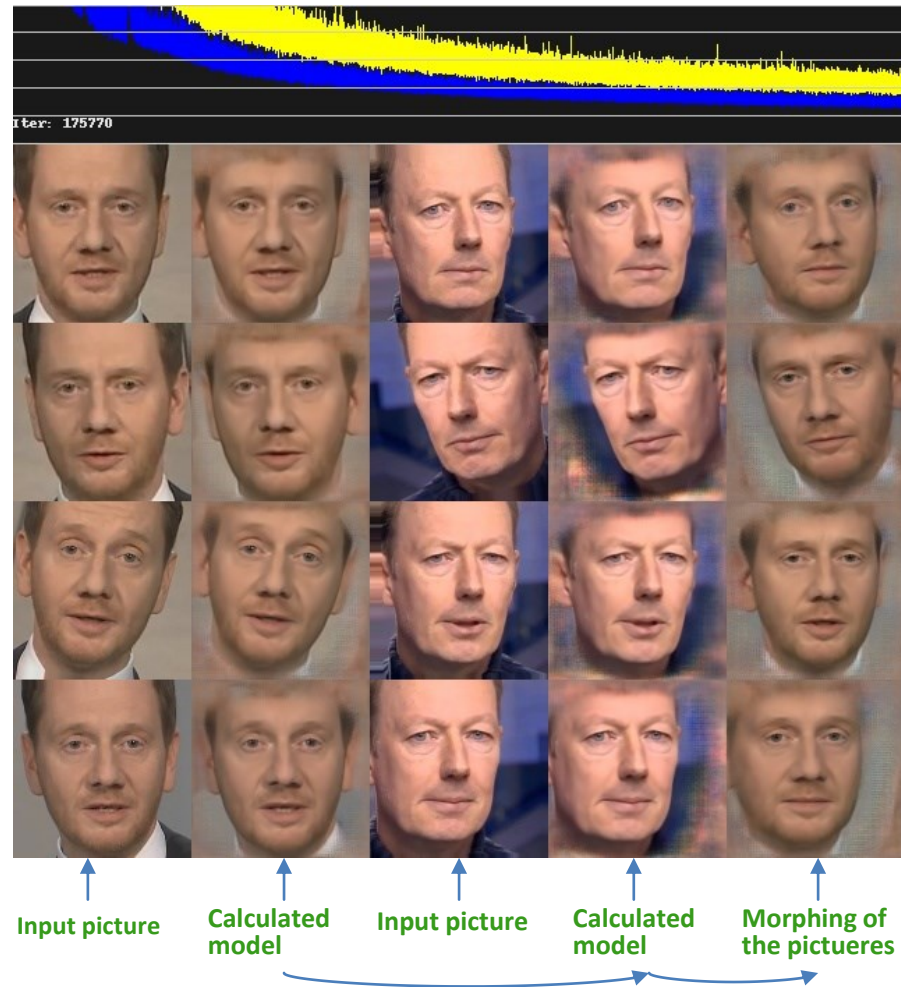


## 3. AI detects faces in frames



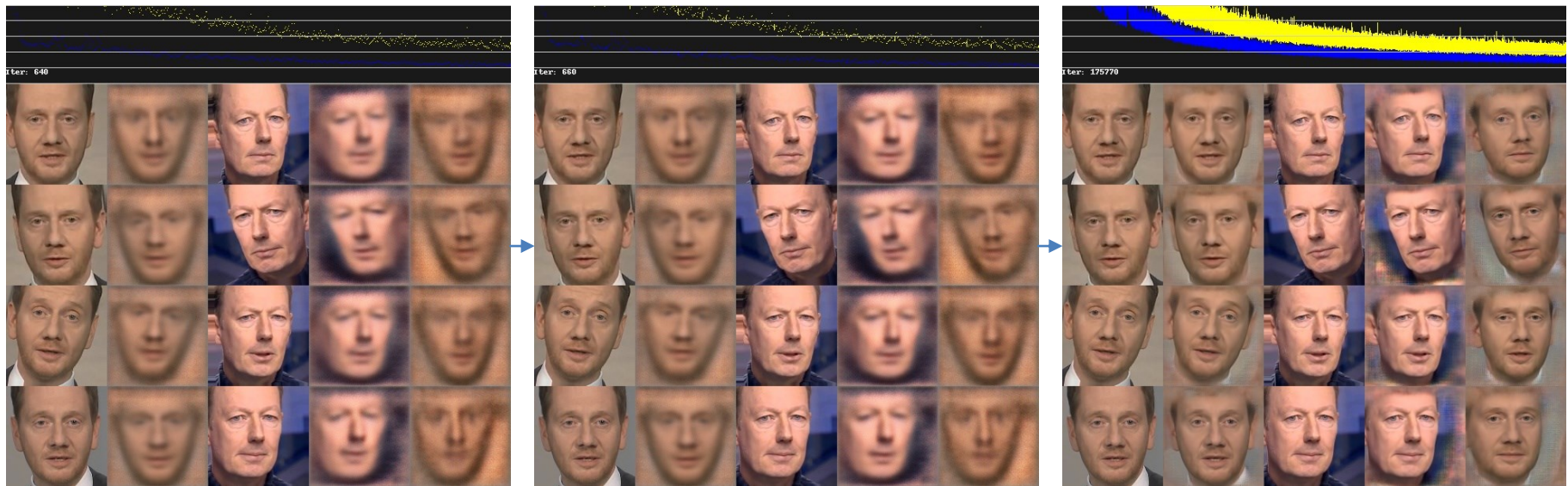
Black edge – shadows

# Deepfake with GitHub – Code



# Deepfake with GitHub – Code

## 4. Training process - face Matches



Begin of the trainings phase

End of the trainings phase



## 5. Transfer of faces



# Abnormalities

- Shadowing → shaded margin on right half of face
- source material is due, in which you rarely see Michael Kretschmer from this page → can be corrected with further and / or better source material
- recognizable flicker of brightness in the face → Customize the parameters in the authoring software



**A new phenomena?**

Can we use CNN:

- change the image in document/ID card
- Information
- Quality for “online-fraud”

# “Postident” procedure per video chat

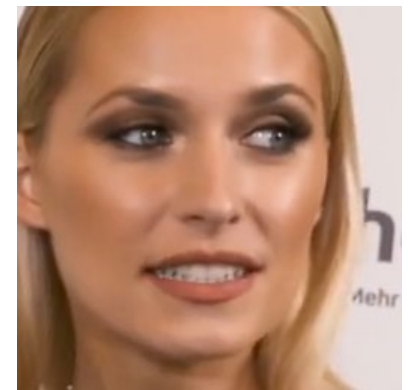
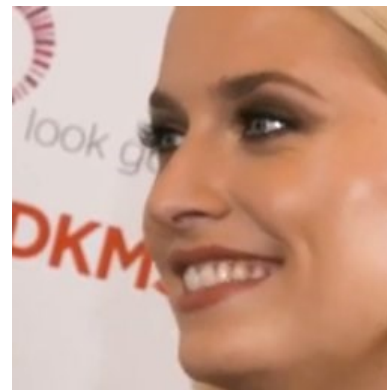
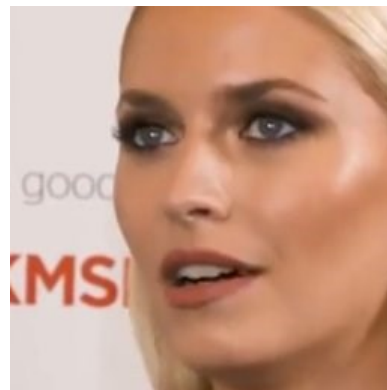
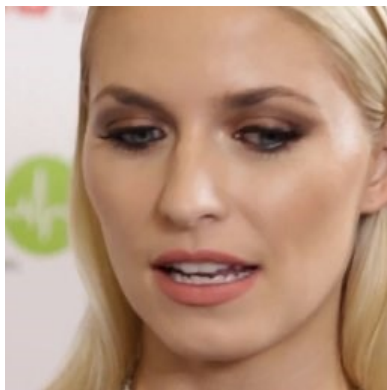
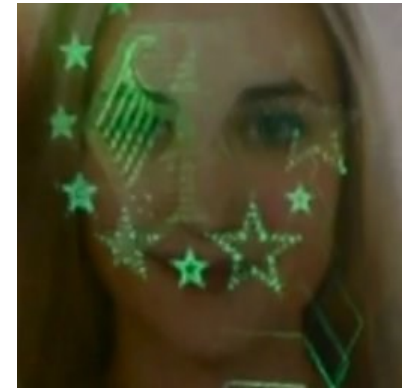
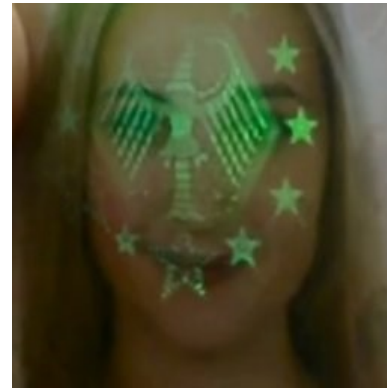
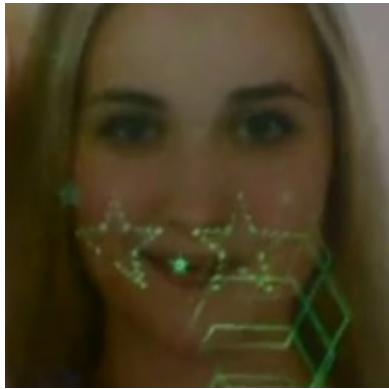


Video identification ...

# Manipulation of the “PostIdent” – procedure



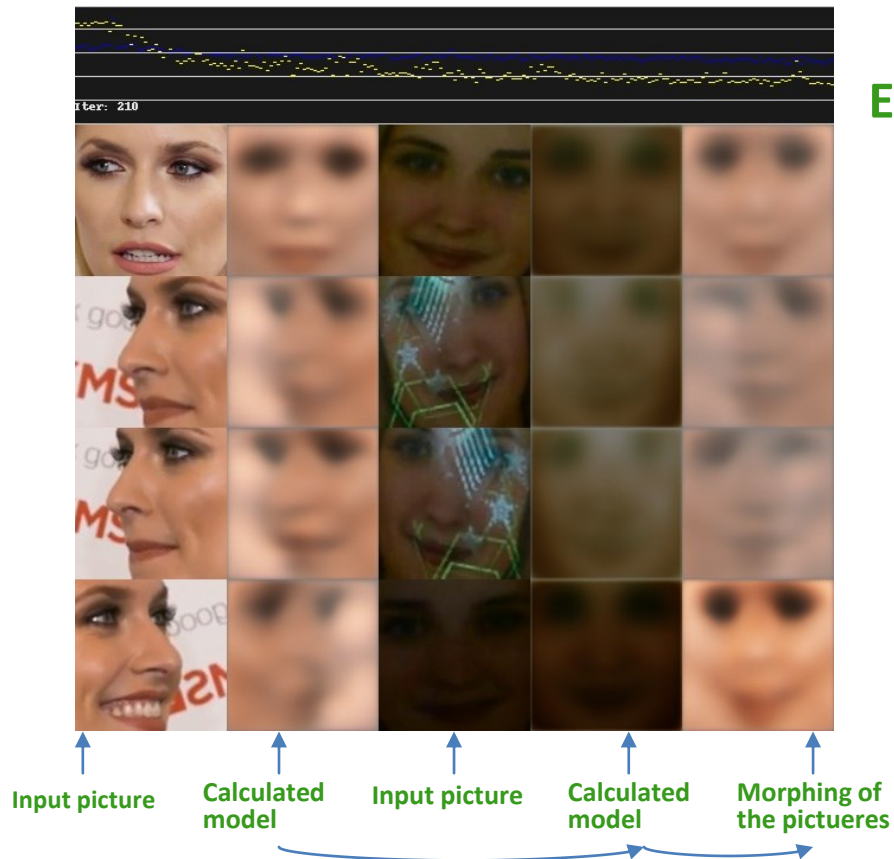
# Manipulation of the “PostIdent” – procedure



faces detection in frames

# Manipulation of the “PostIdent” – procedure

## Begin of the trainings phase



## End of the trainings phase



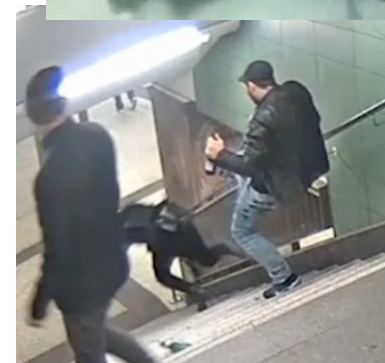
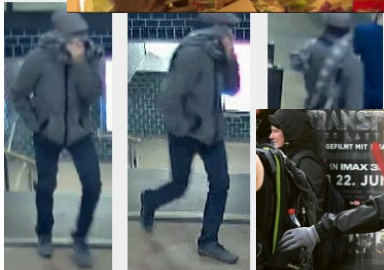


Danger and blessings

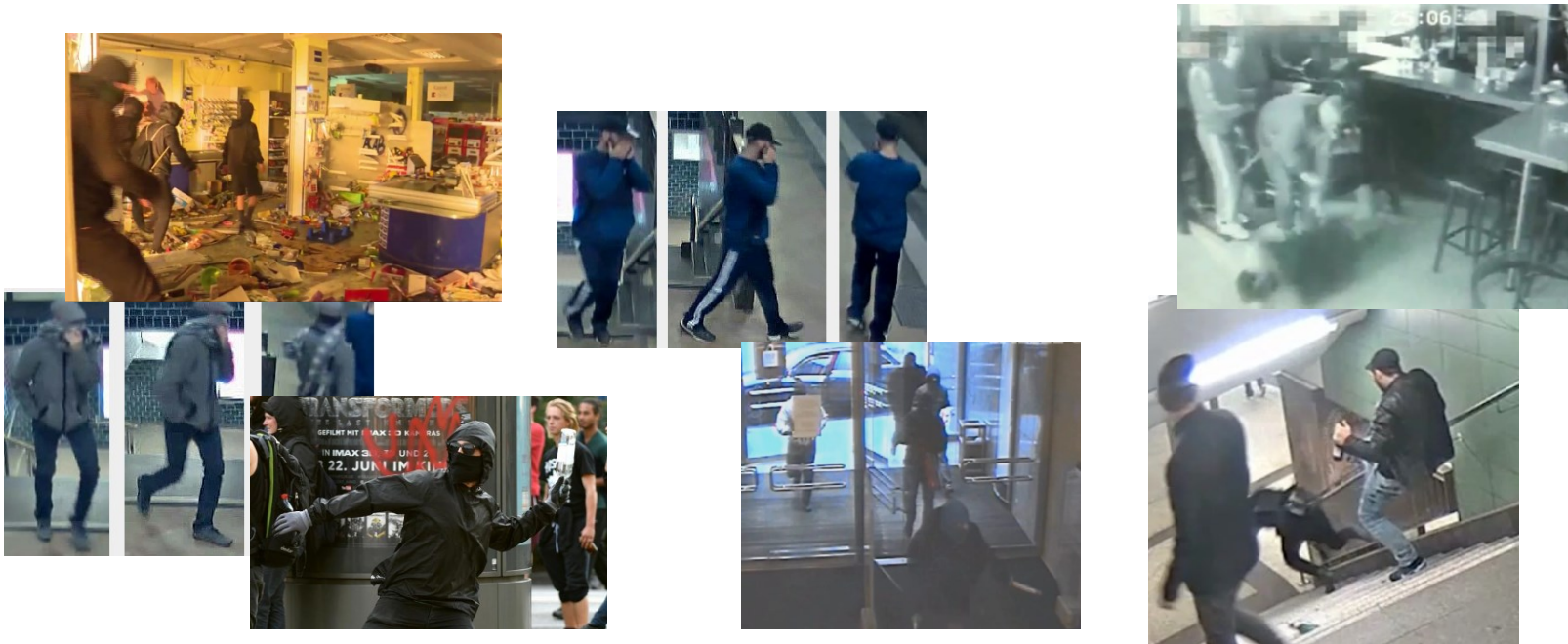


A lot of public videos  
possibilities for the documentation of crime.

**But**  
cover-up



- detection and observation
- offender and Victim (or not)
- what is the story of crime
- Can we detect persons and activities ...



## Identification of obfuscated persons in (public) videos

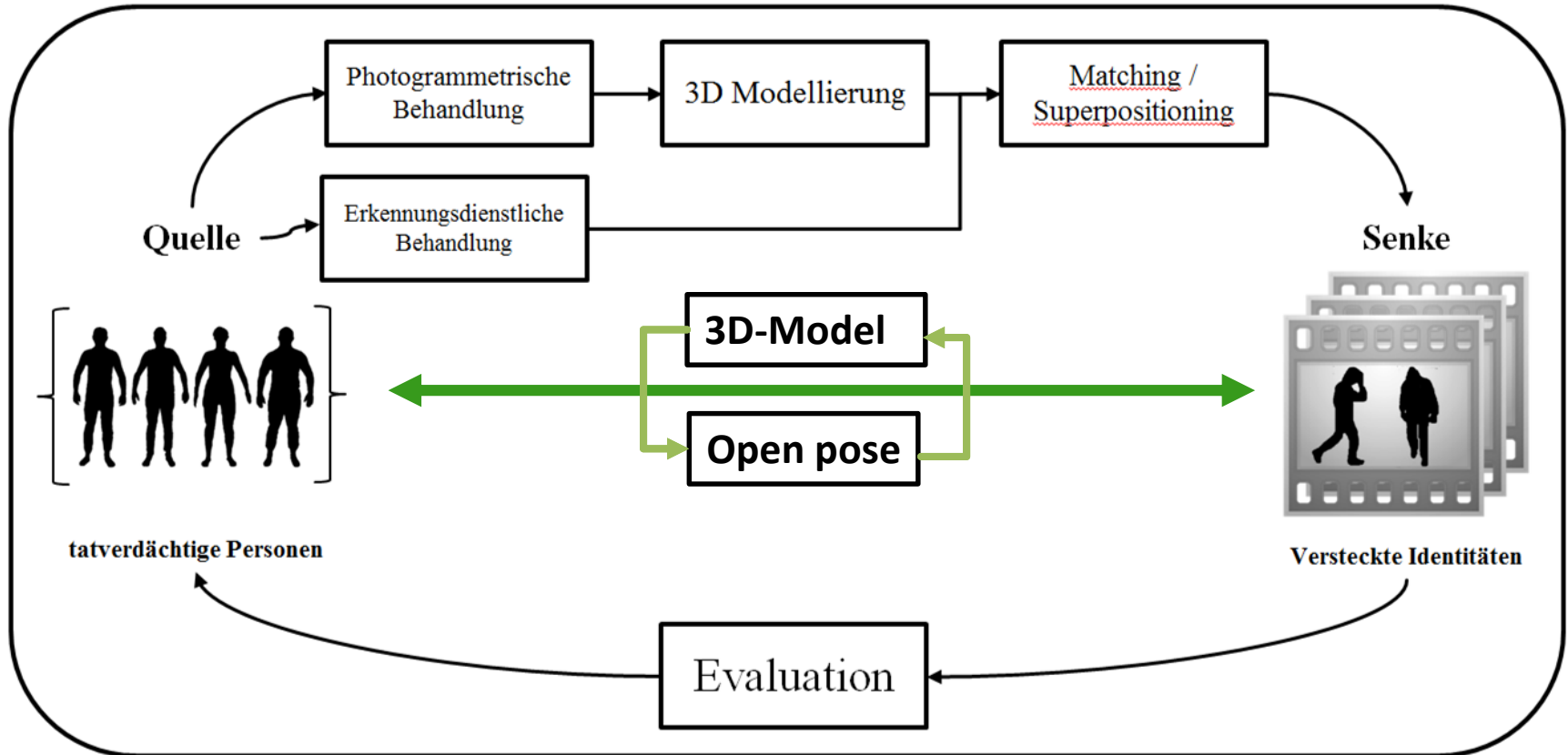
## Identification (face recognition)



1:n  
assignment

or other biometric feature

Gait analysis ... anatomy ... foot print or shoes print



Artificial skellet – rig



**OpenPose represents the first real-time multi-person system to jointly detect human body, hand, facial, and foot keypoints (in total 135 keypoints) on single images.**



Multi-Person Pose Estimation (Python/C++)



## Workflow



turntable



Punktwolke



3D-Modelling

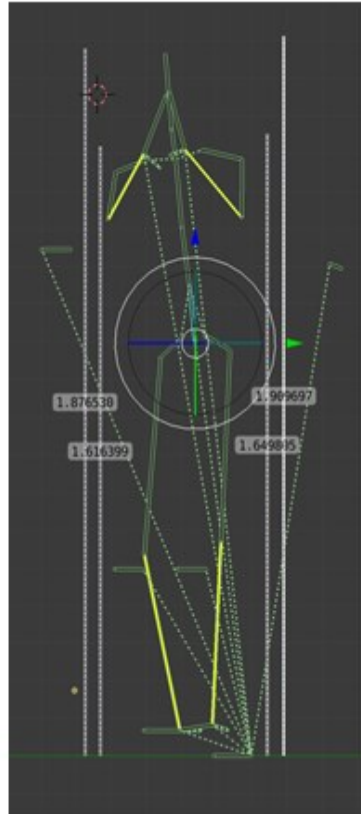


3D-Modell

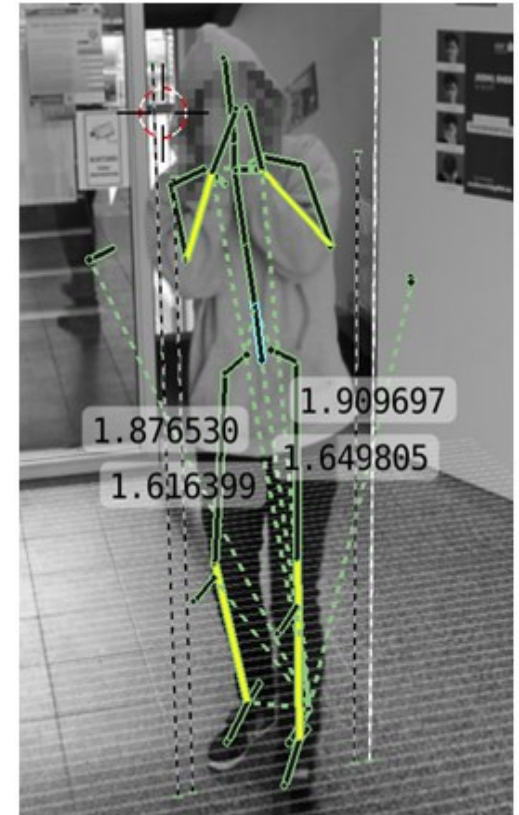
## Distinguishing feature of persons in the sense of biometrics



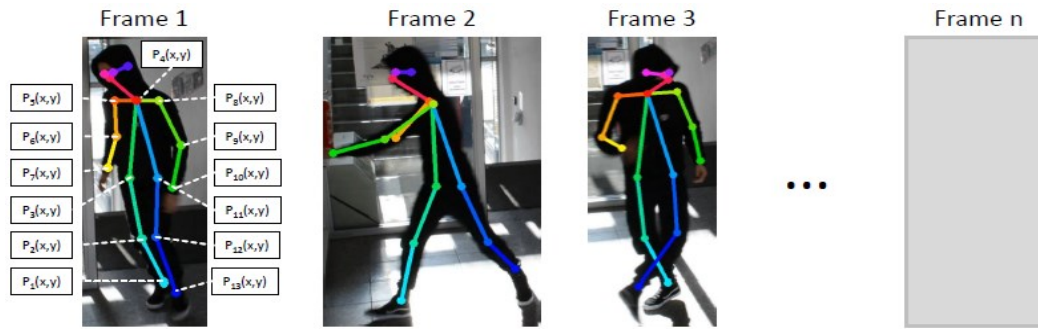
+



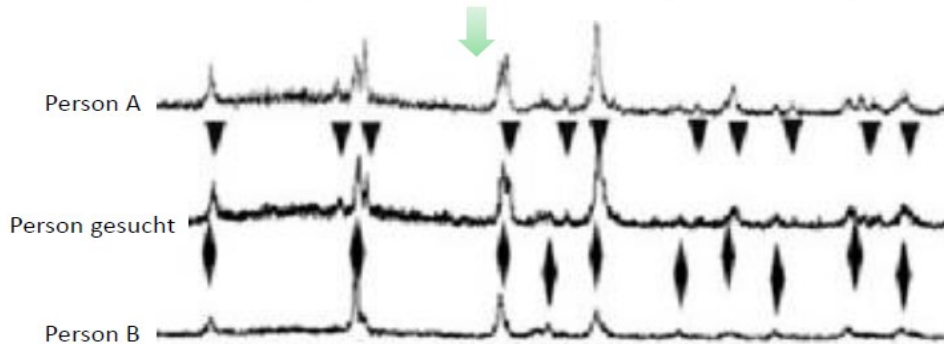
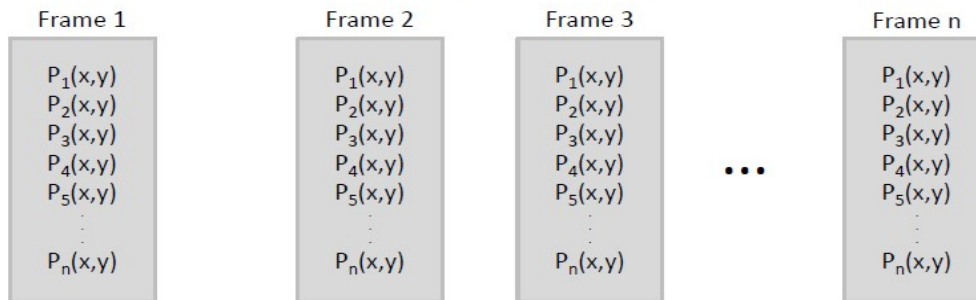
+



# Numerical description of gait pattern

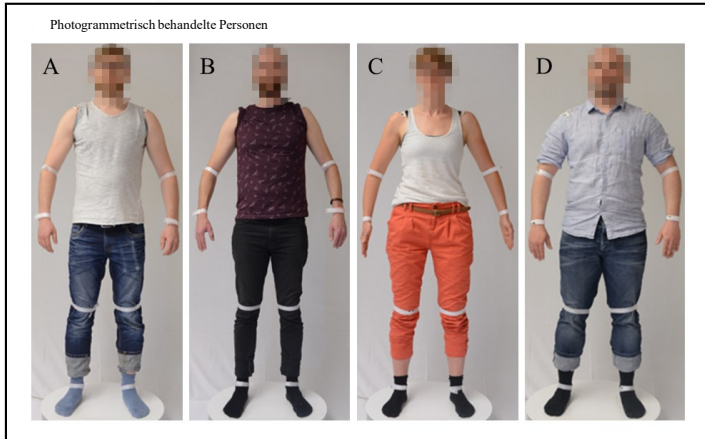


- movement patterns
- Feature vector
- pattern search

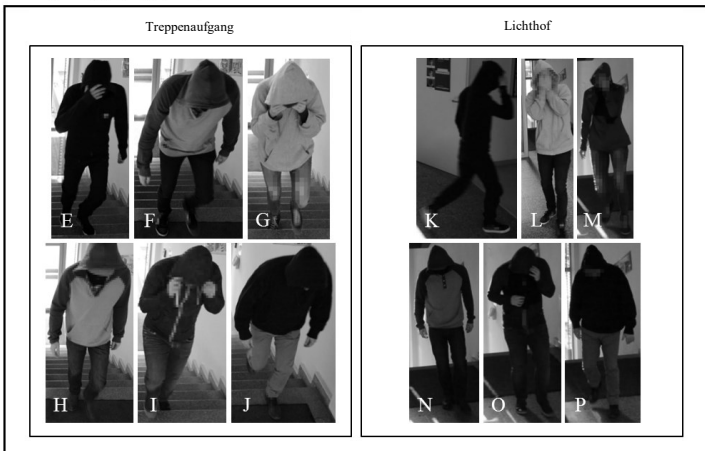


Gait analysis

## Informationsquelle



## Informationssenke



source and sink of information

## Results staircase



## Results atrium



Person A = Person H & Person N  
 Person B = Person F & Person L  
 Person C = Person G & Person M  
 Person D = Person D & Person O

Thanks !

Fo S



FEEL FREE TO ASK QUESTIONS



VISIT US AT: [www.bioforscher.de/FoSIL](http://www.bioforscher.de/FoSIL)